



B MARSHALL MARINE LTD



DSV CURTIS MARSHALL



27 METRE DIVE SUPPORT VESSEL - BUILT IN THE UK

DSV Curtis Marshall has been built specifically for renewable energy, dive support, survey work and general repair/maintenance. An on-board decompression chamber, integrated dive control, ballast transfer capability and a four point mooring system provide a safe and reliable working platform. Meanwhile the 5 tonne A frame, 12.5 tonne crane and full walkabout control for propulsion, steering and four point winch control provide a flexible base for most maritime operations.

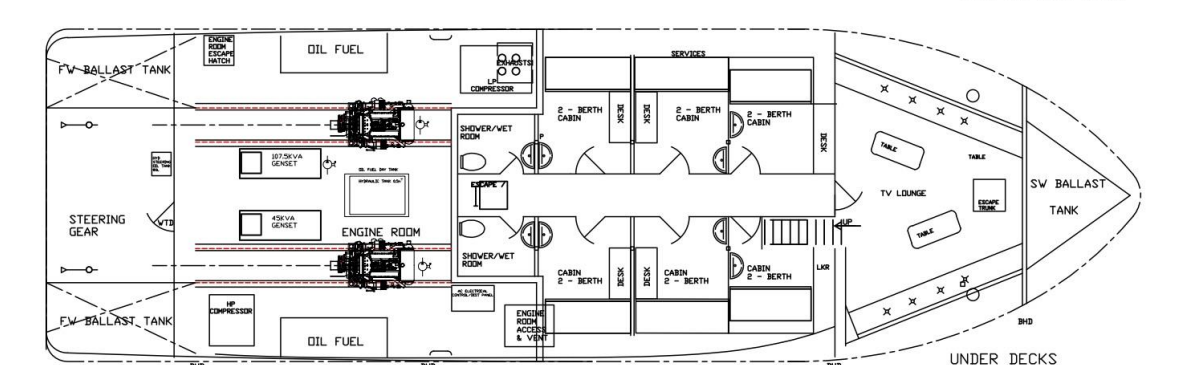
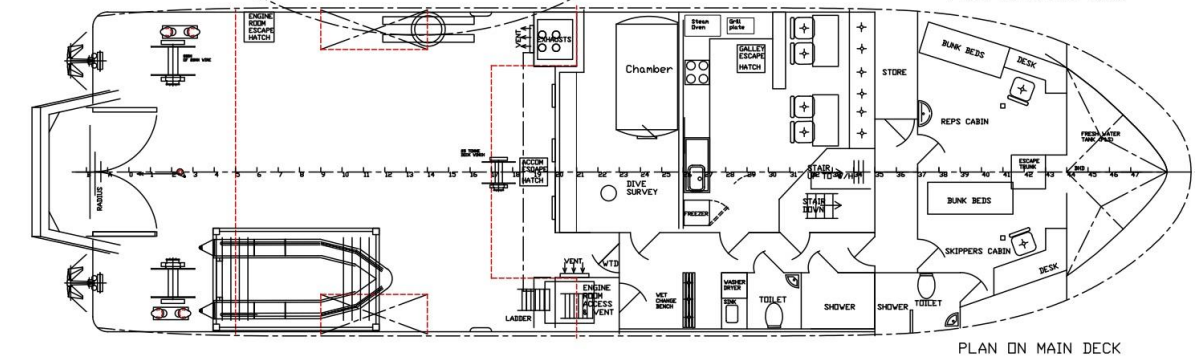
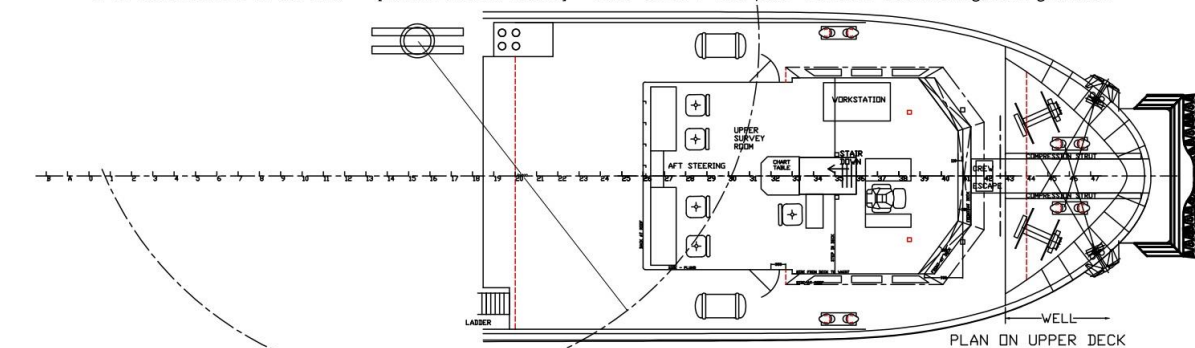
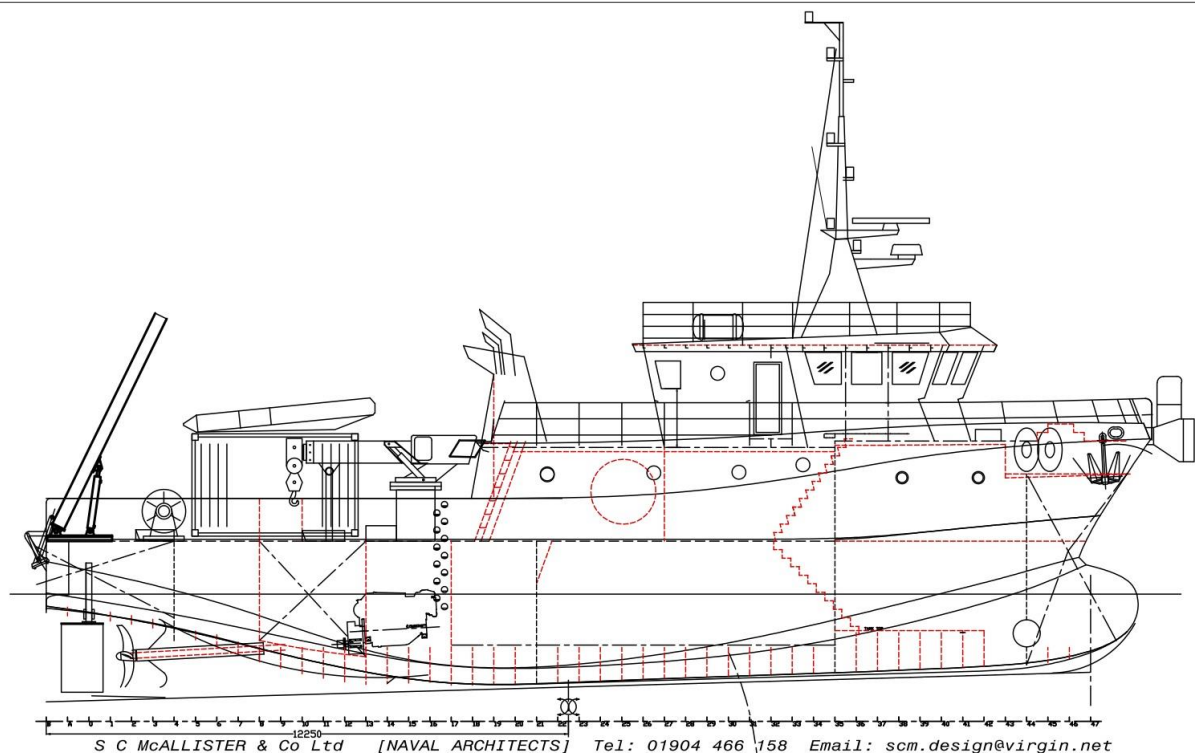
Purpose built Bow Fender with integrated load cells for engagement with wind turbine- Data stored and recorded



DIVING SUPPORT ➡ **SURVEY WORK** ➡ **ROV**

CARGO TRANSPORT ➡ **PERSONNEL TRANSPORT**

For Further info contact Chris Jakeman - 07734 230496 info@bmarshallmarine.co.uk



PRINCIPAL DIMENSIONS
LENGTH OVERALL 25.8 METRES
LOAD LINE LENGTH 23.95 METRES (ON 0.85D WL)
BREADTH (MLD) 7.7 METRES
DEPTH (MLD) 3.6 METRES
DRAUGHT (APPROX) 2.8 METRES

UNDER 24 METRES LOAD LINE LENGTH

This drawing is copyright and must not be copied or used for any purpose without the express permission of S.C. McAllister & Co. Ltd.

26x7.7 METRE DIVE SUPPORT VESSEL
For: B Marshall Marine Ltd

GENERAL ARRANGEMENT
DWG No 65510/1
SCALE 1: 50 REV. E 26/03/14

DSV CURTIS MARSHALL	
Classification	MGN 280 – MCA Category 1 – 150 miles from Safe haven
Length	27m – 24m Waterline
Beam	7.8m
Draught	2.6m
Weight	190 tons
Deck area	Main deck 75m2
TANK CAPACITIES	
Fuel capacity	17,500 m3
Fresh Water	26,000 m3
Hydraulic Oil	500l
Grey Water	1.25m3
Black Water	1.25m3
ENGINES & PROPULSION	
Main Engines	2 x Doosan 4V158TIH coupled to Dongi Gearbox @ 5:1 ratio
Generator 1	Doosan AD066TI coupled to Mecc Alte Alternator – 110 Kva
Generator 2	Doosan AD066 coupled to Mecc Alte alternator – 45Kva
Hydraulic power	2 x Engine mounted 130cc & 1 x Generator driven 147cc – Load sensing 280 l/min
Fuel system	2 x 6,500l main tanks with CJC fed 2,500 litre day tank
Bow Thruster	KORT KT120 – 800kg thrust 120 kw
Steering system	2 x Engine mounted hydraulic pumps – Kobelt FFU control
Propulsion Control	Forward and Aft steering stations with full walkabout control
Speed	Economical- 11.5 knots – Max 13 knots



NAVIGATION EQUIPMENT	
CHART PLOTTER	FURUNO MFDBB MULTIFUNCTION SYSTEM
RADAR	FURUNO DRS12A 12kw 6ft open array – back up stand alone 1835 19”
AIS	FURUNO FA-150 CLASS A
SOUNDER	FURUNO BBDS1 – 1KW TRANSDUCER
AUTOPILOT	FURUNO NAVPILOT 700
NAVTEX	FURUNO NX700A with printer
INMARSAT	FURUNO FELCOM 18 INMARSAT C EARTH STATION
INSTRUMENTS	RO WIND ultrasonic wind speed and direction.
EPIRB & SART	ACR 3 Pathfinder SART, ACR Globalfix pro 406MHz EPIRB
VHF	FURUNO FM9800S CLASS A TRANSCEIVER ICOM- GM1600 Portable GMDSS

Address – Graving Dock, Dockside Road, Middlesbrough, Cleveland, TS3 8AT

ACCOMMODATION	
Cabins	8 x double berth
Galley	Seating for 10- steam oven, upright freezer, hob, microwave, grill
Communal area	Large TV room for with seating for 16 – option as conference room
Facilities	4 x toilet, 4 x shower,



DIVE SYSTEM	
Chamber	60” Twin lock DDC chamber facility
Dive Control	3 diver 13 bar LP/16 bar HP system
LP Compressor	22kw Atlas Copco GA 22
HP Compressor	22kw
Stored Air - LP	3 x 250l receivers
CCTV & Back up	3 x Diver monitoring facility with black box recording
On Deck	Purpose built containerised system and diver recovery aid

DECK EQUIPMENT	
Main Crane	ATLAS EK6500 – 12.5 tonne column mounted – walkabout control
4 POINT MOORING	4 x 7 tonne mooring winches each with 800m of 20mm wire rope
A frame	10 tonne- 2.4m internal clearance. Full proportional control-
Deck Winch	Rotzler 25 tonne dual speed hydraulic winch
Deck wash	5.5kw Cleghorn Waring Deck wash pump
Bow Fender	Purpose built Bow Fender with integrated load cells for engagement with wind turbine- Data stored and recorded
Tender Rib	5.4m tender for diving operations and transfer

For further information visit www.bmarshallmarine.co.uk or contact Chris Jakeman at info@bmarshallmarine.co.uk or 07734 230496



For Further info contact Chris Jakeman – 07734 230496 info@bmarshallmarine.co.uk